



## Rehabilitate the Historic Laurel Dormitory

---

Yellowstone National Park (YELL)

YELL- 312116

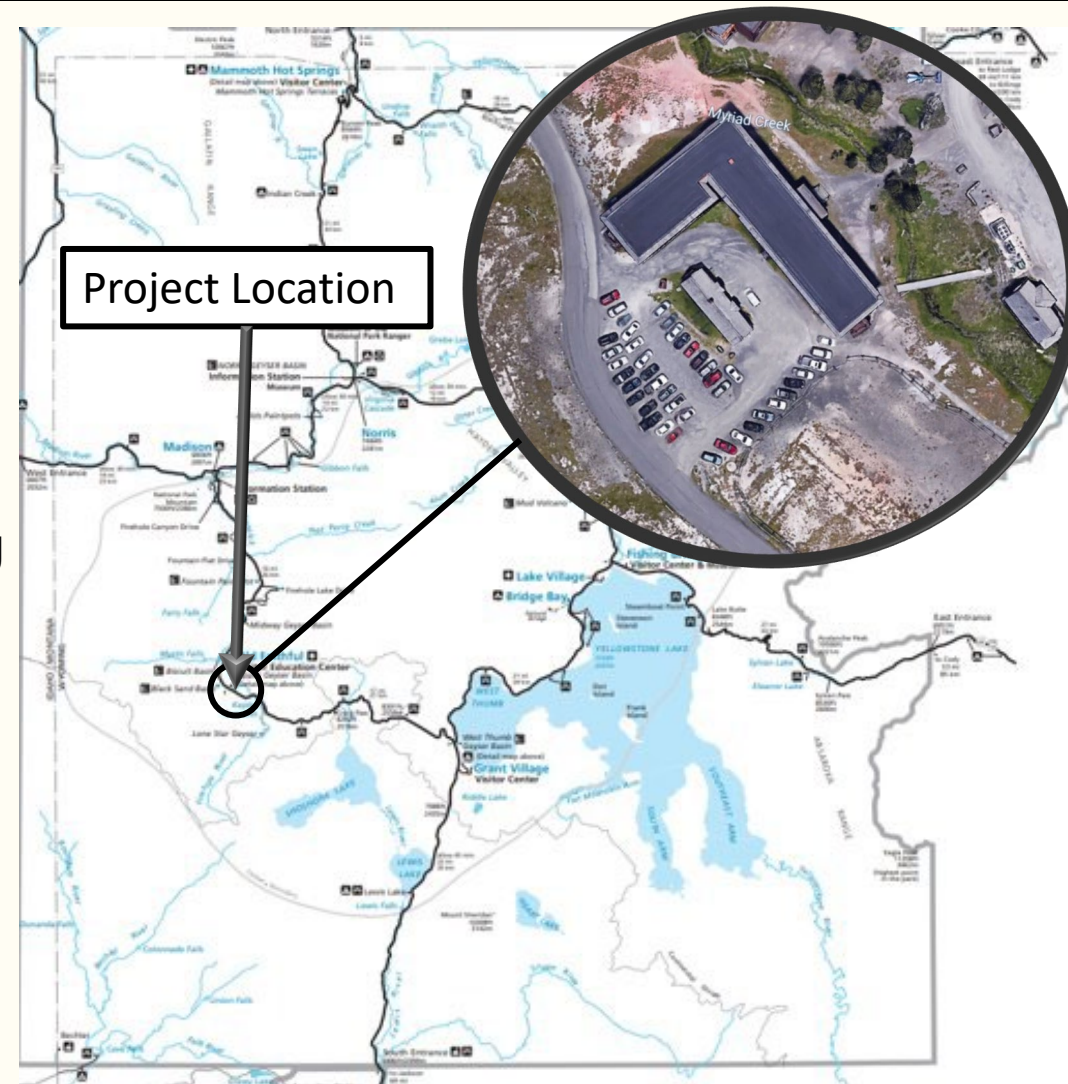




## Rehabilitate the Historic Laurel Dormitory

This Design-Build project will Rehabilitate the Historic Laurel Dormitory. The project includes the rehabilitation of the historic exterior, including replacement of the historic Reamer porches. The interior of the building will be converted from a dorm to (20) apartments. Work includes structural/seismic upgrades, building envelope upgrades, MEP, and site work.

- Location
  - Old Faithful Historic District
  - Yellowstone National Park (YELL), WY
- Estimated Price
  - \$10M - \$20M



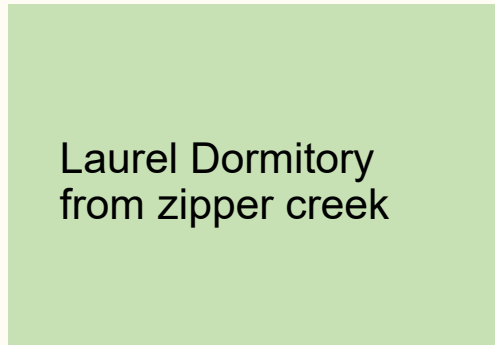


## Rehabilitate the Historic Laurel Dormitory

- Design & Construction Method:  
Design / Build
- Procurement Method:  
Full & Open Competition
- Schedule (Approximate):  
Solicitation Date: 06/01/2022  
Award Date: 08/15/2022  
Period of Performance:  
Design Phase to Spring 2023  
Construction Phase to Summer 2024



Laurel Dorm-View from Old Faithful Inn



Laurel Dormitory from zipper creek



Old Faithful Historic District







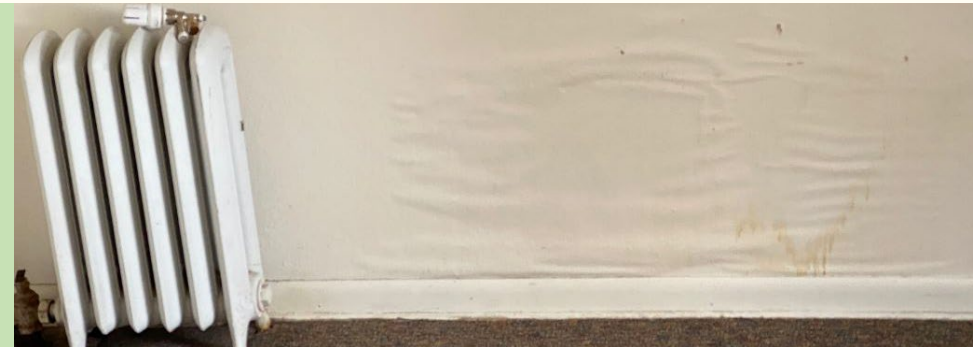
## Rehabilitate the Historic Laurel Dormitory

- Performance Constraints & Other Considerations
  - Historic Building – Project will maintain/rehabilitate as much of the exterior historic fabric as possible
  - Proximity to Old Faithful Inn
  - Winter access is over snow



Historic Front Porch with wood sourced from the Park, including the characteristic gnarled eaves

Typical water damage due to high humidity, a result of being built on top of active geothermal ground



View in the attic, Poor Building envelope improper seismic diaphragm & connectors





# Rehabilitate the Historic Laurel Dormitory

## Other Information:

- Basic Schematic Level concept
- Project will remove the non-historic external egress stairs and move the fire egress stairs inside to allow replacement the historic porches
- Existing plumbing is affected by geothermal activity
- Humid environment has led to the development of mold, requires mitigation

